

1



* With your truck at correct ride height and correct length, come off the rear tires on each side $8\frac{3}{4}$ " and mark the floor.

2



* Using a straight edge draw a line on the floor from mark to mark under the frame.

3

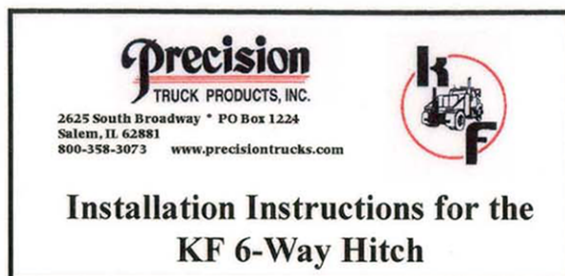


* Hold your square on the side of the frame and measure from some point on the frame that will be the same on both sides.

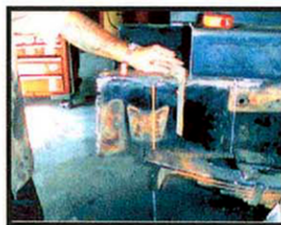
*** (The Forward Rear Schackle)**

* Go with your longest measurement and mark the frame, square with the floor.

* Uneven tire wear may make your first mark vary, that is why you go off the Schackle.



4a



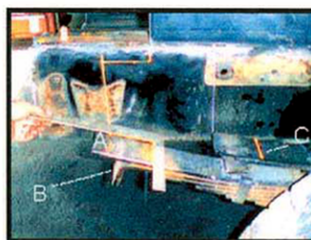
* From the top of the frame measure down $1\frac{1}{2}$ ". Measure $3\frac{3}{4}$ " back from your first mark.

*** Figures 4a & 4b.**

* Cut and notch each side the same.

* The back of your hitch will butt against the frame when drawn all the way in.

5a



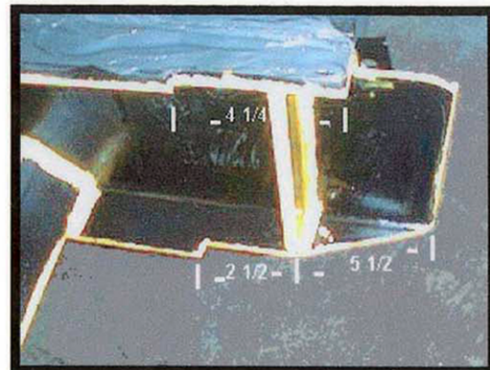
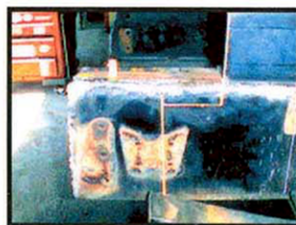
* With Spring Ride trucks you may have to cut your springs back to keep them from hitting your hitch.

* You want at least $1\frac{1}{2}$ " clearance. The springs may flatten out some with a load on.

* On this truck I cut the top leaf back 5" (A). Cut the bottom at the bend (B) Rebend the bottom leaf to make a lip for the spring box bolt. You may also have to trim your overload springs to have clearance for you spring boxes(C).

*** Illustrated in Figures 5a and 5b**

4b

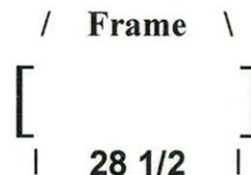


Inside Notches

*Notch bottom from outside corner forward $5\frac{1}{2}$ " at an angle then straight forward $2\frac{1}{2}$ " (I have a 2" piece of flt cut to those dimensions to use as a guide.)

*The top I notch back $4\frac{1}{4}$ "

*The object is to have at least 28" clearance side to side your hitch back when drawn in.



Frame Bracing

* $1\frac{1}{2}$ " x 2" flat bar to support your hitch when extended

* $1\frac{1}{2}$ " x 2" flat bar side to side inside frame.

* $3\frac{1}{2}$ x $3\frac{1}{2}$ $\frac{3}{8}$ Angle welded solid to keep your fr. from spreading.

Bottom of Frame

* Put these last two pieces inside the frame loosely, make sure your hitch is drawn all the way in. Check to make that everything clears before you weld them in place.

